

FREEHOLD

House - Semi-Detached

69 WORTHING ROAD,
RUSTINGTON,
LITTLEHAMPTON,
WEST SUSSEX, BN16
3JU

£365,000

FEATURES

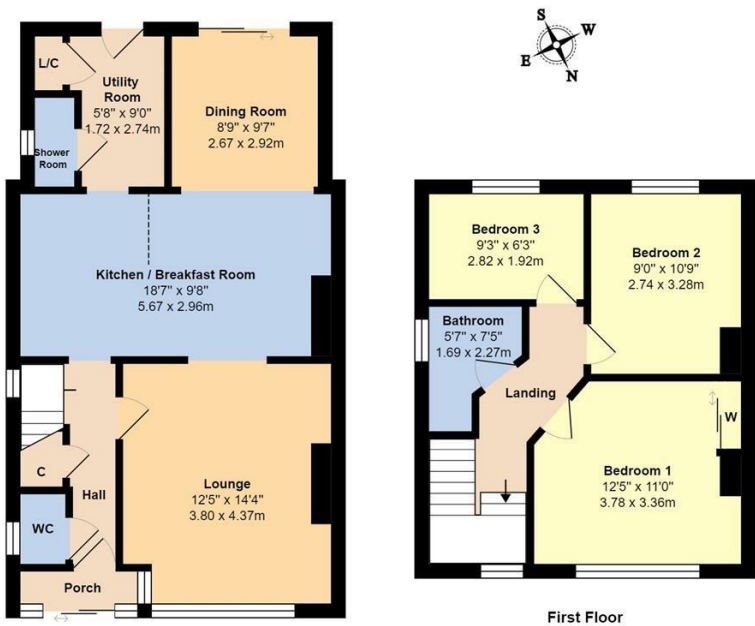


3 Bedroom House - Semi-Detached located in Littlehampton

****NO ONWARD CHAIN**** | Extended Semi-Detached House | Three Bedrooms | Lounge | Kitchen/Breakfast Room | Dining Area | Utility Room | Separate Ground Floor Shower Room & WC | Bathroom/WC | Gas C/Heating | Double Glazing | SOUTH FACING GARDEN | Detached Garage & Off Road Parking at Rear | EER: D

Call us on
01903 770095
rustington@glyn-jones.com
www.glyn-jones.com

Council Tax Band



Ground Floor

First Floor

Total Area: 1030 ft² ... 95.7 m²

Whilst every attempt has been made to ensure the accuracy of the floor plan contained here, measurements are approximate and no responsibility is taken for error, omission or mis-statement.
 This plan is for illustrative purposes only and should be used as such by any prospective purchaser.
 Created by Jtm 2022

Energy Efficiency Rating		
	Current	Potential
Very energy efficient - lower running costs		
(92 plus) A		
(81-91) B		
(69-80) C		
(55-68) D		
(39-54) E		
(21-38) F		
(1-20) G		
Not energy efficient - higher running costs		
England & Wales	EU Directive 2002/91/EC	

Agents Note: Whilst every care has been taken to prepare these particulars, they are for guidance purposes only. All measurements are approximate and are for general guidance purposes only and whilst every care has been taken to ensure their accuracy, they should not be relied upon and potential buyers are advised to recheck the measurements.

